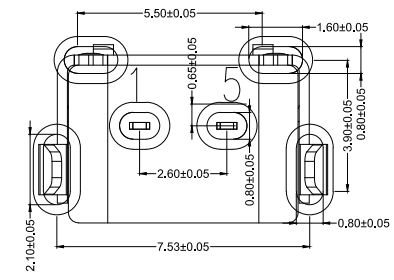
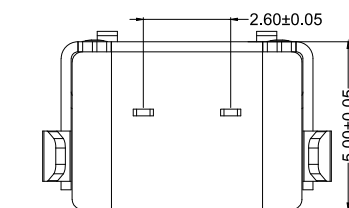
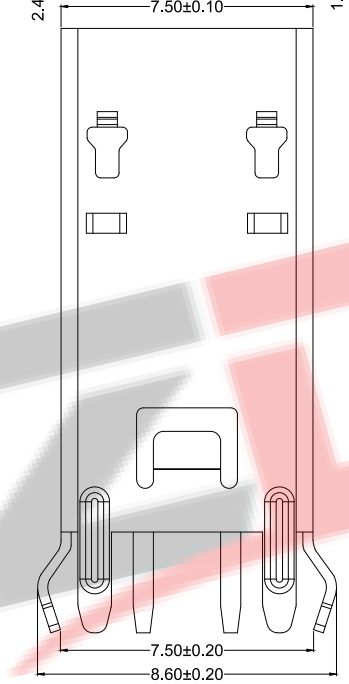
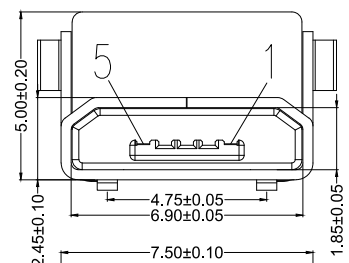


RoHS Compliant

Halogen Free

customer drawing

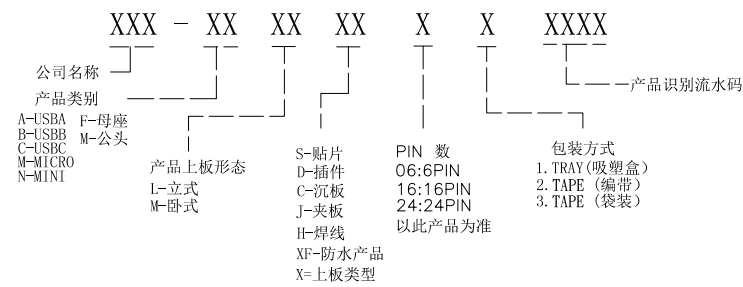


RECOMMENDED PCB LAYOUT

备注:

- 产品规格:
  - 插入力: 35N MAX.
  - 拔出力: 10N MIN. INITIAL 8-20N AFTER 1500 CYCLES
  - 额定电流: 1.0A
  - 额定电压: 30V
  - 耐久性: 1500 CYCLES MIN.
  - 耐电压: 100V AC MIN.
  - 接触阻抗: 30mΩ MAX. INITIAL; 40mΩ MAX AFTER 1500 CYCLES
  - 绝缘电阻: 100MΩ MIN
  - 工作温度: -30° TO +80°
- 材质:
  - 胶芯: LCP UL94V-0
  - 端子: C2680R-H, 镍底, GOLD
  - 外壳: SPCCorSUS, 表面镀镍60-100 μ
- 所用材质须符合RoHS要求
- 重点尺寸标识"▲"符号

料号编码:



MICRO USB B TYPE PIN ASSIGNMENTS

PIN NUMBER	1	2	3	4	5
SIGNAL NAME	VBUS				GND

**ZDX** 深圳市兆达鑫科技有限公司  
Shenzhen zhaodaxin Technology Co., Ltd

TITLE:		PART NO.: ZDX-MFLD21CY06		
MICRO 2PIN加长立式直插15母座		TEL: 0755-29888153		
工程图		WEB: <a href="http://www.szzdjmkj.com/">http://www.szzdjmkj.com/</a>		
THIRD ANGLE PROJECTION	UNIT:	SCALE:	SIZE:	SHEET:
	mm	1:1	A4	1/1