

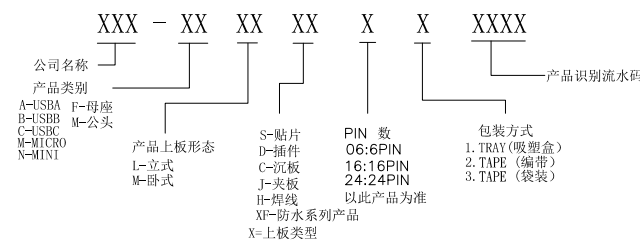
|     |     |     |      |      |    |    |      |      |     |     |     |
|-----|-----|-----|------|------|----|----|------|------|-----|-----|-----|
| A1  | A2  | A3  | A4   | A5   | A6 | A7 | A8   | A9   | A10 | A11 | A12 |
| GND |     |     | VBUS | CC1  | D+ | D- | SBU1 | VBUS |     |     | GND |
| GND |     |     | VBUS | SBU2 | D- | D+ | CC2  | VBUS |     |     | GND |
| B12 | B11 | B10 | B9   | B8   | B7 | B6 | B5   | B4   | B3  | B2  | B1  |

特性:

- 一、电气性能: ELECTRICAL
  1. 额定电流: 5.0A
  2. 接触阻抗: 40 MILLIOHMS MAX
  3. 耐电压: 100V AC / 1 mA MAX
  4. 绝缘阻抗: 150V DC/100 MEGA OHMS MIN
- 二、机械性能:
  1. 插入力: 5~20N
  2. 拨出力: 8~20N
  3. 使用寿命: 10000次、拔出力 5N MIN
- 三、材料: MATERIAL
- 四、电镀: FINISH
  1. 端子: 接触点镀金1U~MIN  
PIN脚焊接区域镀锡80U~MIN
  2. 外壳: 镀镍80U~MIN (盐雾48H)
- 五、电镀品需做粘锡测试: 粘锡面积达到95%以上。
- 六、SMT回流焊 (峰值260° C±5° C) 不能起泡、熔胶、变色不良 (变形在公差范围以内)
- 七、工作温度: -55° C~+85° C
- 八、盐雾测试: 通过48H在浓度为5±1%盐水的盐雾测试无生锈现象

| BOM |           |    |    |   |
|-----|-----------|----|----|---|
| 序号  | 名称        | 料号 | 用量 | 品名规格  |
| 1   | 外壳        |    | 1  | Typec立插 外壳 SUS304 T=0.30mm                      |
| 2   | Molding 3 |    | 1  | Typec立贴 SMT 16PIN Molding C7025 LCP黑色 L=6.5 半成品 |
| 2.1 | Molding 1 |    | 1  | Typec立贴 SMT 16PIN Molding A C7025 LCP黑色 L=6.5   |
| 2.2 | Molding 2 |    | 1  | Typec立贴 SMT 16PIN Molding B C7025 LCP黑色 L=6.5   |
| 2.3 | 卡勾        |    | 1  | Typec立贴 SMT 16PIN 卡勾 SUS301 T=0.15mm L=6.5      |

料号编码:



**ZDX** 深圳市兆达鑫科技有限公司  
Shenzhen zhaodaxin Technology Co., Ltd

TITLE: PART NO.: ZDX-CFLS162JC01

Type-C 16PIN 立插 SMT 型 L=6.5

TEL: 0755-29888153

工程图

WEB: <http://www.szzdjmkj.com/>

THIRD ANGLE PROJECTION

UNIT:

SCALE:

SIZE:

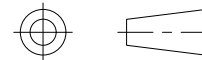
SHEET:

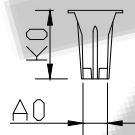
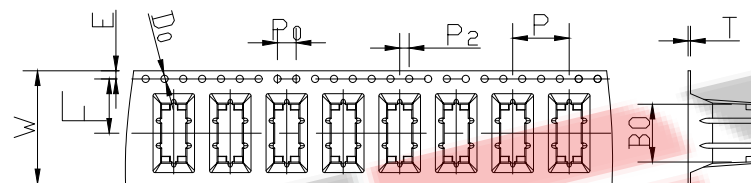
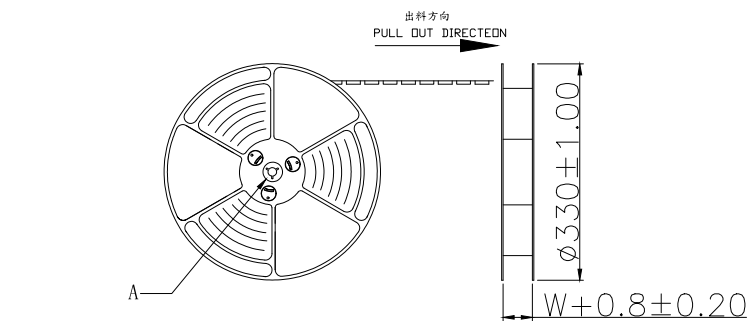
mm

1:1

A4

1/2

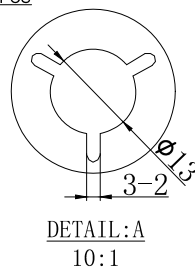
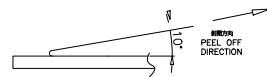




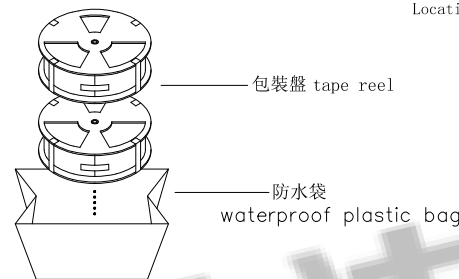
NOTES

1. 帶子引導長度  
LEAD TAPE LENGTH  
出料方向  
PULL OUT DIRECTEON

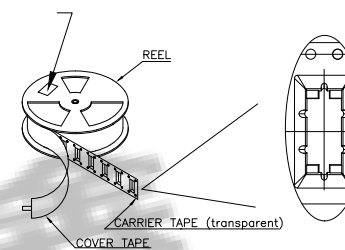
2. 上帶 剝力力為:  $0.1 \sim 1.3N$  ( $10.2gf \sim 130gf$ )  
PEELING OFF FORCE OF TOP TAPE:  $0.1 \sim 1.3N$  ( $10.2gf \sim 130gf$ )  
出貨 運輸過程中一定注意:  
THIS REQUIREMENT SHOULD BE APPLIED AT SHIPMENT:  
卷帶在運輸過程中不能散開  
PEELING OFF SHOULD NOT BE ALLOWED DURING TRANSPORTATION



紙箱: 340mmX340mmX300mm



at small positioning hole of the carrier tape side.  
標籤黏貼處 (朝捲裝包材的小定位孔一側)  
Location of label sticking (label)



NOTE:

1. 每捲包裝數量及每箱裝箱數量如左下表格。  
Packing q'ty of each reel & carton as below table shown.
2. 將裝滿產品的卷盤放入紙箱並以膠帶封口  
Put reels in the carton and use adhesive tape to seal up.

|    |           |
|----|-----------|
| W  | 24.00±0.3 |
| A0 | 5.24±0.1  |
| B0 | 12.30±0.1 |
| K0 | 10.55±0.1 |
| P  | 12.00±0.1 |
| F  | 11.50±0.1 |
| E  | 1.75±0.1  |
| DO | 1.50±0.1  |
| P0 | 4.00±0.1  |
| P2 | 2.00±0.1  |
| T  | 0.50±0.05 |

|    |                       |                    |
|----|-----------------------|--------------------|
| 卷帶 | 規格: $\phi 330mm$      | 包裝數量: 500PCS       |
| 紙箱 | 規格: 340mmX340mmX300mm | 包裝數量: 8盤 (4800PCS) |

**ZDX** 深圳市兆達鑫科技有限公司  
Shenzhen zhaodaxin Technology Co., Ltd

|                                 |       |  |       |        |
|---------------------------------|-------|--|-------|--------|
| TITLE:                          |       | PART NO.: ZDX-CFLS162JC01  |       |        |
| Type-C 16PIN 立插 SMT 型L=6.5 包裝規範 |       | TEL: 0755-29888153   |       |        |
| 工程圖                             |       | WEB: <a href="http://www.szzdjmkj.com/">http://www.szzdjmkj.com/</a> |       |        |
| THIRD ANGLE PROJECTION          | UNIT: | SCALE:   | SIZE: | SHEET: |
|                                 | mm    | 1:1  | A4    | 1/2    |